



GENERAL
CATALOGUE

CONTENT

ABOUT US

NITI ROTARY FILES SYSTEM

HAND USE FILES

DENTAL BURS & POLISHING

OBTURATION

The image shows a low-angle shot of a modern glass skyscraper against a clear blue sky. The Ashredent logo is mounted on the upper part of the building's facade. The logo consists of the word "ashredent" in a white, lowercase, sans-serif font. The letter "e" is replaced by a stylized white tooth icon. Below the main text, the tagline "the precise solution" is written in a smaller, lighter font.

ashredent
the precise solution

At Ashredent™, we are dedicated to providing top-quality dental supplements and equipment to professionals around the world. Our products are designed to enhance the precision and effectiveness of dental treatments. With a commitment to innovation, reliability, and superior customer service, we believe that Ashredent™ is your last stop. Trust Ashredent™ for all your dental supply needs, and experience the difference in quality and performance.

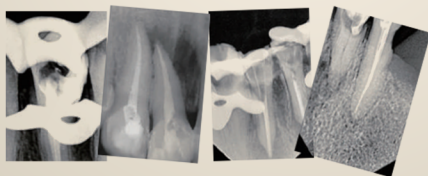
GOLD ROT MAX



- Pulls more into the channel with more aggressive penetration;
- Three blades and a non-cutting tip;
- Unique gold-heated activation optimize cutting efficiency and facilitate advancement of the instrument in the canal.

HOW TO CHOOSE SUITABLE ROTARY FILES

It is the first choice for the pursuit of extreme efficiency, which is suitable for the anterior teeth and moderate and slight curved root canals or the posterior teeth with simple root canals



SAFE TIP



TRIANGLE CROSS



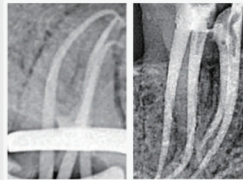
MEMORY CONTROLLED

Length(mm)	Size	Taper(%)	Tip(mm)	Match Gutta Point
19	○SX	3.5-19	0.19	/
	○S1	2-11	0.17	/
	○S2	4-11.5	0.20	/
21/25/31	●F1	7	0.20	● F1
	●F2	8	0.25	● F2
	●F3	9	0.30	● F3
	●F4	6	0.40	● F4
	●F5	5	0.50	● F5

BLUE ROT MAX

- Inherited for decades, traditional variable taper system;
- Specifically designed to provide superior flexibility, unparalleled efficiency and great safety for canal morphology;
- Enables clinicians to more consistently create uniformly tapered shapes in anatomically difficult or significantly curved canals;

- Designed for curved and narrow, calcification and other complex root canals
- Minimize the risk of instrument separation and avoid step side penetration
- Handle difficult root canals safely and confidently



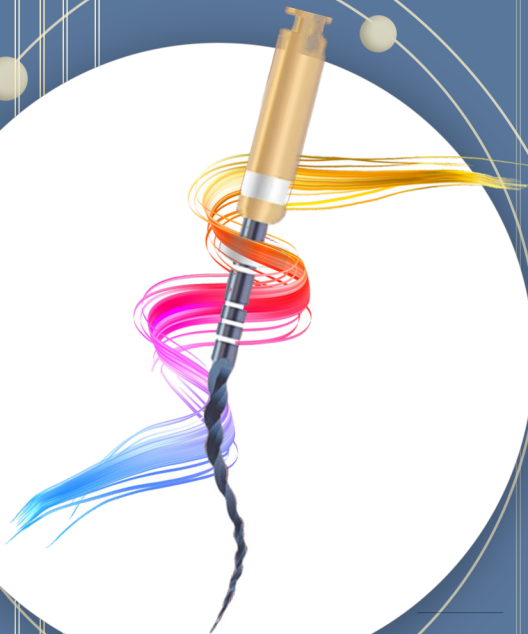
TRIANGLE CROSS



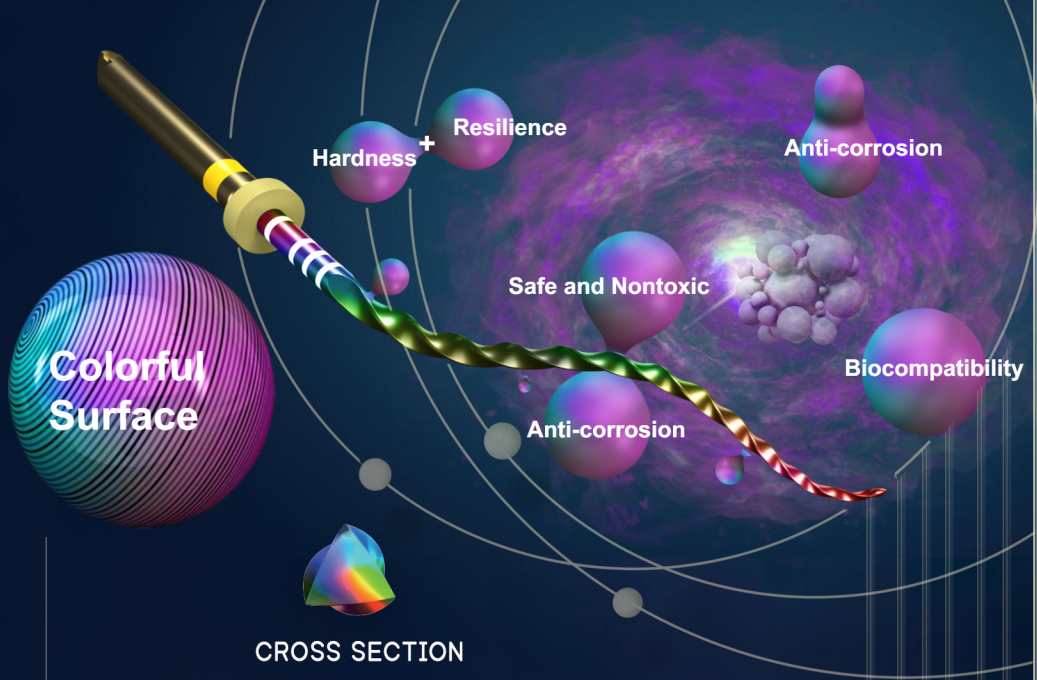
MEMORY CONTROLLED



SAFE TIP



Length(mm)	Size	Taper(%)	Tip(mm)	Match Gutta Point
19	○ SX	3.5-19	0.19	/
	○ S1	2-11	0.17	/
	S2	4-11.5	0.20	/
21/25/31	● F1	7	0.20	● F1
	● F2	8	0.25	● F2
	● F3	9	0.30	● F3
	● F4	6	0.40	● F4
	● F5	5	0.50	● F5

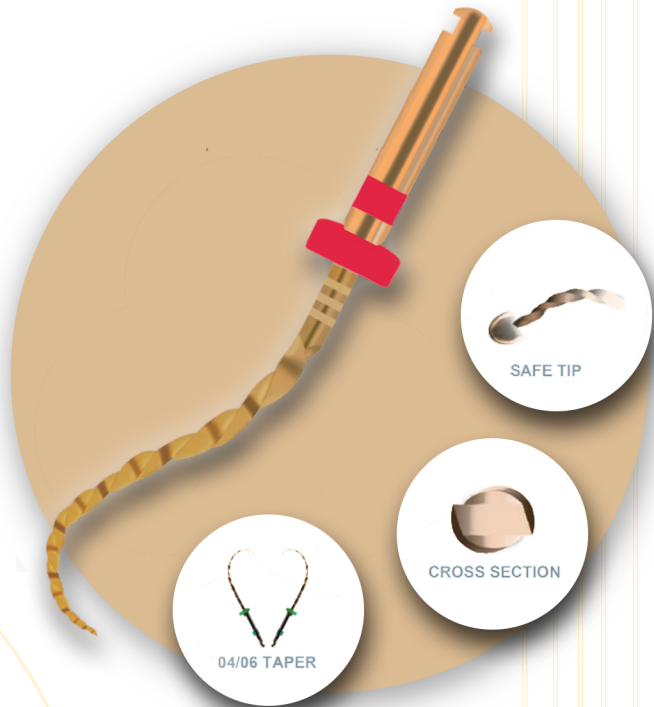


CROSS SECTION

Nano files, as the most advanced technology used in rotary file production, represent a new generation of rotary files that have the potential to revolutionize the industry. These files utilize laser quenching technology and feature a ceramic coating of titanium nitride, which grants them exceptional toughness. Being NITI heat activated, these files offer superior cutting efficiency. Additionally, the ceramic coating provides them with corrosion resistance, remarkable tenacity, and resistance to crashes and shocks. Nano files are truly a unique combination of cutting efficiency and flexibility. Thanks to the incorporation of laser quenching technology and Nano coating, they exhibit 3 to 10 times greater abrasive resistance and a remarkable %168 increase in surface hardness.

NANO ROT MAX

Length(mm)	Size	Taper(%)	Tip(mm)	Match Gutta Point
19	○SX	3.5-19	0.19	/
	○S1	2-11	0.17	/
	S2	4-11.5	0.20	/
21/25/31	○F1	7	0.20	— ○ F1
	○F2	8	0.25	— ○ F2
	○F3	9	0.30	— ○ F3
	○F4	6	0.40	— ○ F4
	○F5	5	0.50	— ○ F5



- Constructed from a highly elastic nickel-titanium alloy for superior performance.
- Exhibits shape memory properties (heat-treated at approximately °600C), providing excellent flexibility to adapt to canal morphology, along with high fracture and corrosion resistance.
- Features a square cross-section and specialized cutting edge for efficient cutting, while the flexible design preserves the natural shape of the root canal walls.
- The innovative variable cross-section and variable pitch design enhance fracture resistance and improve debris removal efficiency.

Length(mm)	Size	Taper(%)	Tip(mm)	Match Gutta Point
19	○ 01/09	9	0.25	/
21/25/31	● 20/04	4	0.20	● 20/04
	● 25/04	4	0.25	● 25/04
	● 30/04	4	0.30	● 30/04
	● 35/04	4	0.35	● 35/04
	● 25/06	6	0.25	● 25/06

PRO-
FLEXI
ROT
MAX

NT ROT MAX

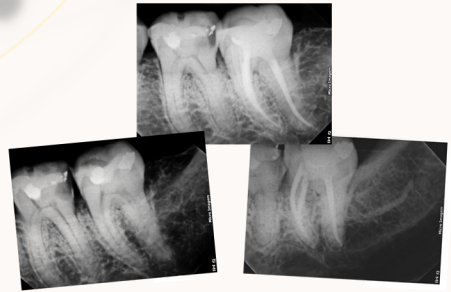
NT ROT MAX is a continuous rotary system with small taper and small size that does not over cut dentin and preserves natural root canal.

FEATURES

New heat treatment process increase the flexibility and cyclic fatigue resistance

S cross-section for higher cutting efficiency and ensures effective debris removal

Wide range of file size, effectively master canal anatomies from simple to complex.



Length(mm)	Size	Taper(%)	Tip(mm)	Match Gutta Point
21/25/31	#15/04	4	0.15	○
	#20/05	5	0.20	●
	#25/04	4	0.25	●
	#25/06	6	0.25	●
	#30/04	4	0.30	●



OPENER



GLIDER



SHAPER

NC ROT MAX



TRIPLE HELIX CROSS SECTION

Composed of NC OPENER, NC GLIDER and NC SHAPER, NC FILES are a simple, safe and efficient rotary files system, perfectly meets dentists expectations of a smoothly and comfortable process.

Length(mm)	Size	Taper(%)	Tip(mm)	Match Gutta Point
17	#25/09	9	0.25	○
	#15/03	3	0.15	○
	#25/04	4	0.25	●
21/25/31	#25/06	6	0.25	●
	#35/06	6	0.35	●
	#40/04	4	0.40	●

PEDO ROT MAX

Short thread design, matching the short root canal of kids teeth.

The small files protect the fragile root canal wall of baby's teeth effectively

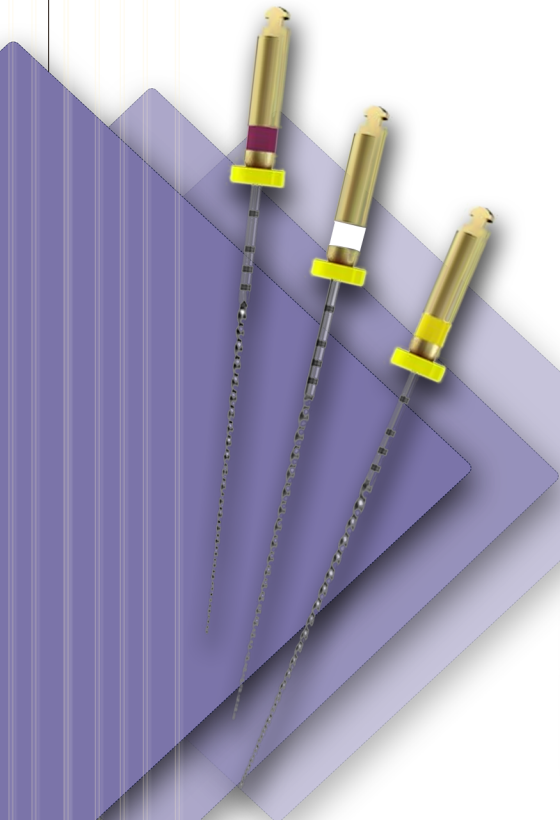
Length(mm)	Size	Taper(%)	Tip(mm)
17	○ 25#04	04	0.25
17	○ 25#06	06	0.25
17	○ 30#04	04	0.30
19	○ 40#04	04	0.40



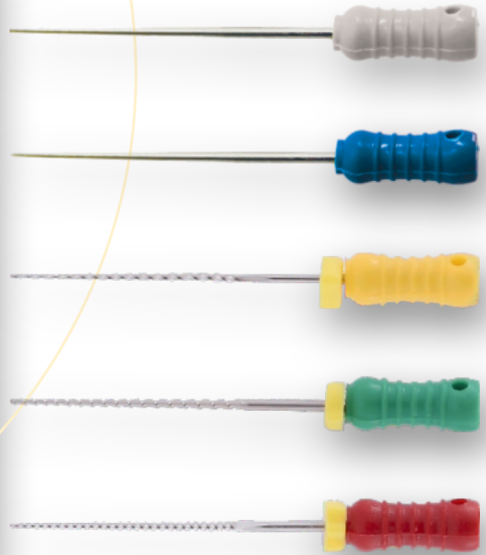
PATH GLIDER ROT MAX

These glider path files offer greater flexibility and cyclic fatigue resistance than manual K-files, making them ideal for curved canals. They reduce canal transportation, speed up instrumentation, preserve original anatomy, and minimize apical debris extrusion, which lowers post-operative pain. Cleaning is easy with an endo clean or soft brush.

Length(mm)	Size	Taper(%)	Tip(mm)
21/25/31	○ 13#	2	0.13
	○ 16#		0.16
	○ 19#		0.19



HAND USE FILES



Reamers, K & H Files Stainless Steel

06 #	08 #	10 #	15 #	20 #	25 #	30 #	35 #
40 #	45 #	50 #	55 #	60 #	70 #	80 #	

21/25/28/31

Reamers, K & H Files Nickel Titanium

-	-	10 #	15 #	20 #	25 #	30 #	35 #
40 #	45 #	50 #	55 #	60 #	70 #	80 #	

21/25/28/31

Spreader Files Stainless Steel / NiTi

15 #	20 #	25 #	30 #	35 #	40 #
------	------	------	------	------	------

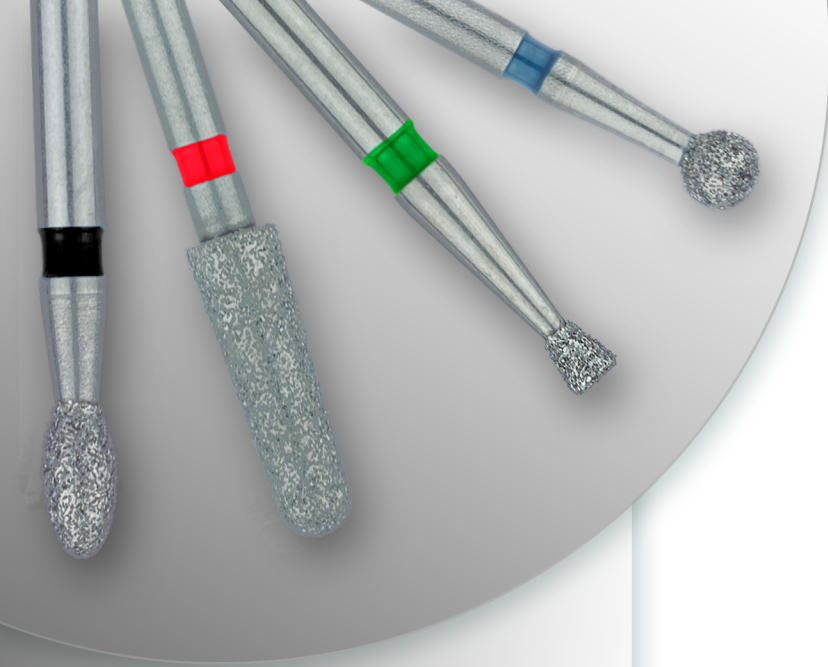
21/25/28/31

C Files Stainless Steel

06 #	08 #	10 #	12.5 #	15 #
------	------	------	--------	------

21/25

DIAMOND & CARBIDE BURS

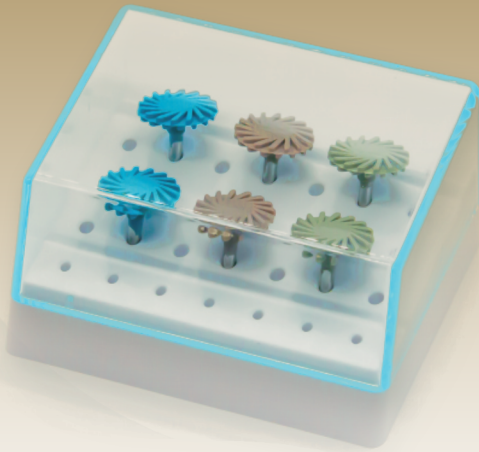


Ref Grain Size (μm)

544			150-180
534			125-150
524			106-125
514			53-63
504			20-30

Advantages





Strictly comply with ISO Standard
 Sharper and More Efficient ;
 Durable and Valuable ;
 Full Range of shapes and grits.
 ideal to break the interproximal
 contact during crown preparation
 create rounded internal
 angles for ceramic or composite
 Inlay and Onlay preparation







RUBBER AND SILICON POLISHING DISKS AND GRINDERS





 3.0 7.0 RD101M	 5.0 10.0 RD103M	 10.0 2.0 RD105M	 6.0 10.0 RD106M
---	--	--	--

Yellow, Extra Fine Recommended R.P.M 10,000-20,000/min




 3.0 7.0 RD101EF	 5.0 10.0 RD103EF	 10.0 2.0 RD105EF	 6.0 10.0 RD106EF
--	---	---	---

 3.0 7.0 RD101F	 5.0 10.0 RD103F	 10.0 2.0 RD105F	 6.0 10.0 RD106F
---	--	--	---

Light Pink, Ultra Fine Recommended R.P.M 10,000-20,000/min

 3.0 7.0 RD101UF	 5.0 10.0 RD103UF	 10.0 2.0 RD105UF	 6.0 10.0 RD106UF
--	---	---	--

 3 7 WSF 01	 2.8 7 WSF 02	 2.5 6 WSF03	 2.5 6 WSF 06	 3 7 SCF101 B	 6.8 10.5 SCF106 B
---	---	--	---	---	--

 13.5 1.0 SDT-14C/Coarse	 13.5 1.0 SDT-14M/Medium	 14.0 1.6 SDT-14F/Fine
--	--	---



ABSORBENT PAPER POINTS

MARKED & UNMARKED

- Highly absorbent
- Color coded
- Taper: 02/04/06
- Sizes: from 15-80#, assorted 15-40#/4

Taper	02	04	06	F series
Packing	120pcs/box	60pcs/box	60pcs/box	60pcs/box
Size	15# 20# 25# 30#	40# 45# 50# 55# 60# 70# 80#	F1 F2 F3 F4 F5	

Taper	02	04	06	F series
Packing	120pcs/box	60pcs/box	60pcs/box	60pcs/box
Size	15# 20# 25# 30#	40# 45# 50# 55# 60# 70# 80#	F1 F2 F3 F4 F5	

- X-rays can be blocked for radiography
- Taper: 02/04/06
- Size: from 15-80#, assorted 15-40#/45-80#

GUTTA PERCHA POINTS

MARKED & UNMARKED





ASHREDENT™ Unit 303B, Durar 1 Building, Dubai Land Complex, Dubai, UAE, PO Box: 181501

info@ashredent.com

+971 56 560 6481